



.....

ECHOMAP™ UHD2 6”, 7” AND 9” CHARTPLOTTERS

NEW PRODUCT ANNOUNCEMENT

OVERVIEW | FEATURES | SCREENSHOTS | CONFIGURATIONS
SPECIFICATIONS | COMPATIBLE ACCESSORIES

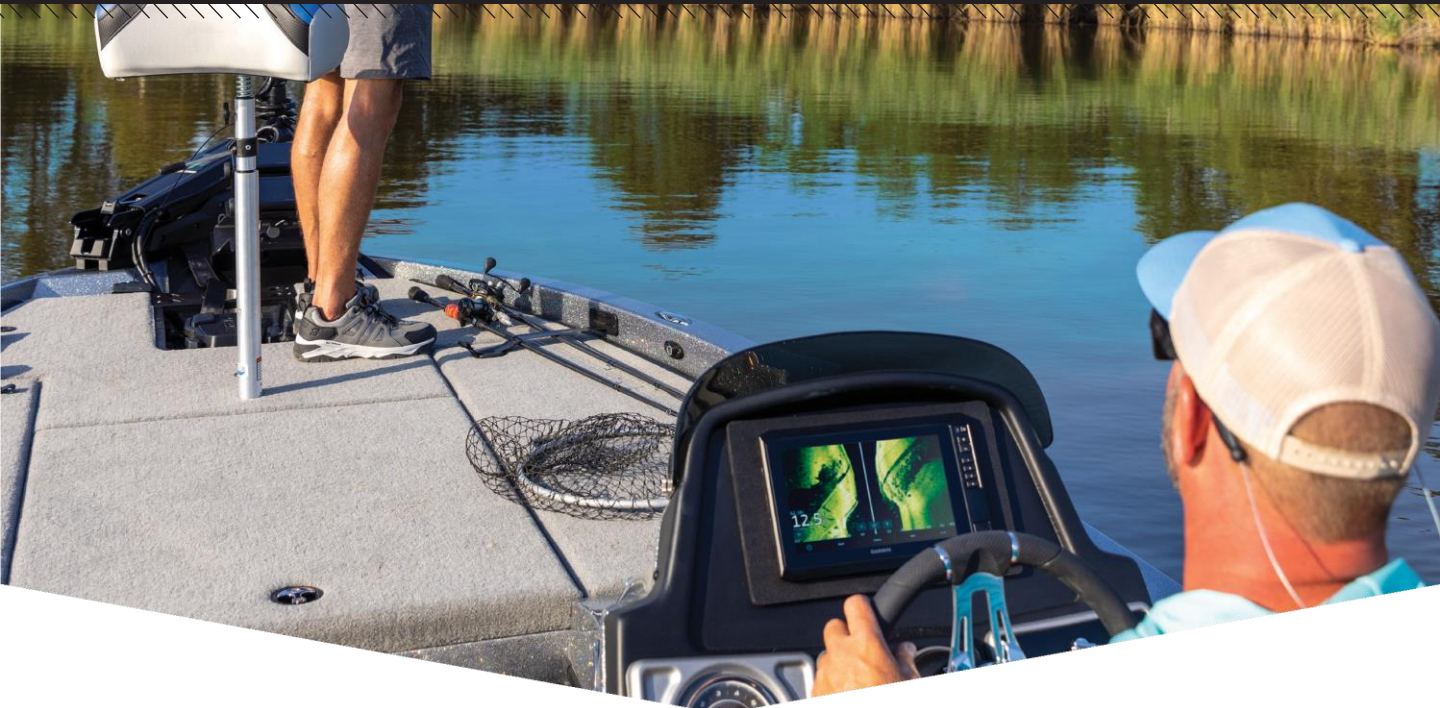
.....

MARKETING MEMO

Jan. 11, 2023

ECHOMAP™ UHD2 CHARTPLOTTERS

NEW PRODUCT
ANNOUNCEMENT



PRODUCT OVERVIEW:

The ECHOMAP™ UHD2 touchscreen with keyed-assist chartplotter knows the water better than a local. Its bright, sunlight-readable display offers improved detail and clarity. See clear, sharp fish arches with Garmin traditional sonar. ClearVü™ and SideVü™ scanning sonars feature vivid colour palettes for clear, high-contrast views all around your boat. ECHOMAP UHD2 also supports LiveScope™ sonar systems. Navigate the waters with optional Garmin Navionics+™ cartography, which comes with a 1-year subscription to daily chart updates. Built-in Wi-Fi® connectivity lets you wirelessly share sonar, waypoints and routes with another ECHOMAP UHD2 chartplotter. Wherever you drop your line, get improved position accuracy, particularly in areas where signals are reflected or weak, with multi-band GPS. You can also pair with the free all-in-one ActiveCaptain® app on your compatible smartphone for access to the OneChart™ feature, software updates and more. The chartplotter supports NMEA 2000® networks to connect your compatible autopilots, digital switching, music and more to view all on one screen.



ECHOMAP™ UHD2 CHARTPLOTTERS

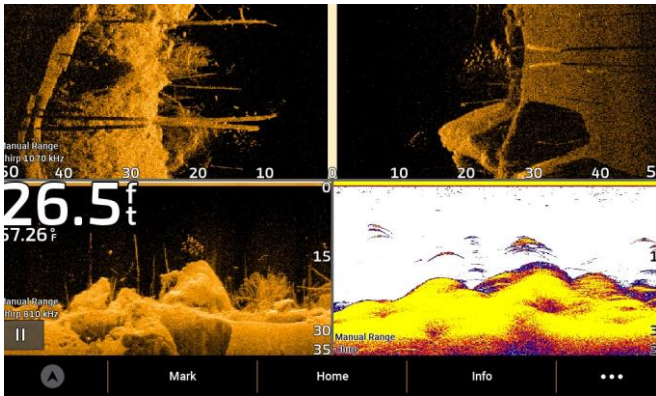
**NEW PRODUCT
ANNOUNCEMENT**

KEY FEATURES:

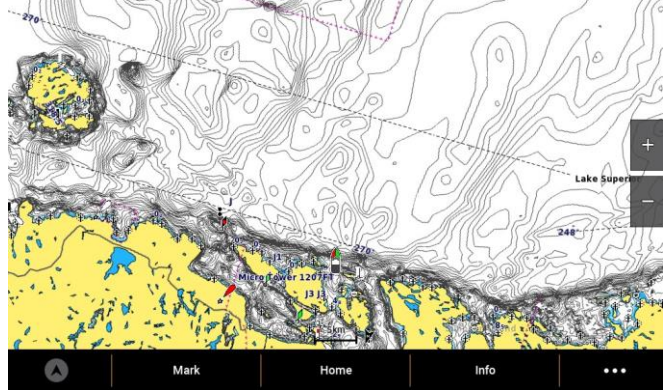
NEW	DISPLAY	Easy-to-use touchscreen with keyed assist with a bright, sunlight-readable display.
NEW	IMPROVED SCREEN RESOLUTION	9" units now feature increased screen resolution (1024 x 600) when compared to previous models.
NEW	ULTRA HIGH- DEFINITION SONAR	See below your boat with Garmin traditional, ClearVü™ and SideVü™ scanning sonars with vivid colour palettes. Compatible with LiveScope™ live scanning sonar.
	WIRELESS NETWORKING	Built-in Wi-Fi® connectivity lets you wirelessly share sonar, waypoints and routes with another ECHOMAP UHD2 chartplotter.
	ADD CHARTS	Experience unparalleled coverage and detail with optional Garmin Navionics+ integrated mapping or optional Garmin Navionics Vison premium mapping with relief shading, satellite imagery, Auto Guidance+¹ and more. They even come with a 1-year subscription for downloadable daily updates.
	MULTI-BAND GPS	Includes multi-band GPS, which utilizes multiple frequencies for improved position accuracy, particularly in areas where signals are reflected or weak.
	EXPAND YOUR SYSTEM	Supports wired NMEA 2000® network connectivity.
	ACTIVECAPTAIN® APP	Pair with the free all-in-one ActiveCaptain® app on your compatible smartphone for access to the OneChart™ feature, software updates and more.
	TROLLING MOTOR INTEGRATION	Wirelessly connects to your Force® trolling motor to create and follow routes, navigate to waypoints, control speed, check battery life and more.

SCREENSHOTS:

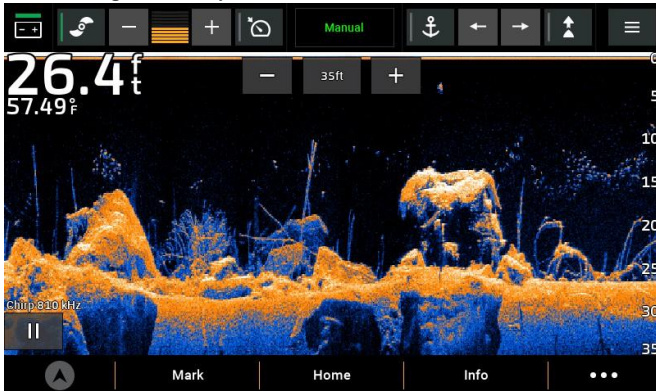
Ultra High-Definition Sonar



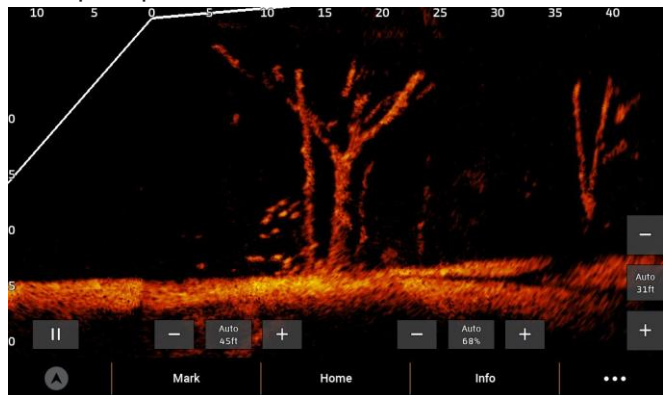
Garmin Navionics+ mapping



Force Trolling Motor Compatible



LiveScope Compatible



ECHOMAP™ UHD2 CHARTPLOTTERS

**NEW PRODUCT
ANNOUNCEMENT**

PRODUCT CONFIGURATIONS:

WITH TRANSDUCER
SCHEDULE B: 9014802000
HTS: 9014.80.2000

WITHOUT TRANSDUCER
SCHEDULE B: 8526910070
HTS: 8526.91.0040

**ECHOMAP™
UHD2 6" series**



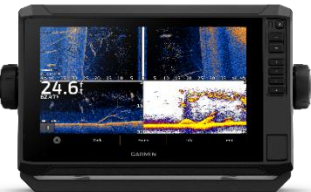
INCLUDES		COUNTRY OF ORIGIN				
ECHOMAP UHD2 6" chartplotter, GT54 transducer where noted, power cable, tilt/swivel mount with quick-release cradle, flush mount, protective sun cover, hardware and documentation.		Made in Taiwan. Cables made in China or Taiwan.				
DESCRIPTION	SKU	UPC				
ECHOMAP UHD2 62sv, without transducer	010-02679-00	753759307783				
		RRP:				
EUR	GBP	NOK	SEK	DKK	FIN EUR	
899.99	-	9 699	10 199	6 999	929	
DESCRIPTION	SKU	UPC				
ECHOMAP UHD2 62sv, with GT54 transducer	010-02679-01	753759307790				
		RRP:				
EUR	GBP	NOK	SEK	DKK	FIN EUR	
1,199.99	-	12 899	13 599	9 299	1 239	

**ECHOMAP™
UHD2 7" series**



INCLUDES		COUNTRY OF ORIGIN				
ECHOMAP UHD2 7" chartplotter, GT54 transducer where noted, power cable, tilt/swivel mount with quick-release cradle, flush mount, protective sun cover, hardware and documentation.		Made in Taiwan. Cables made in China or Taiwan.				
DESCRIPTION	SKU	UPC				
ECHOMAP UHD2 72sv, without transducer	010-02683-00	753759307868				
		RRP:				
EUR	GBP	NOK	SEK	DKK	FIN EUR	
1,099.99	-	11 799	12 499	8 549	1 139	
DESCRIPTION	SKU	UPC				
ECHOMAP UHD2 72sv, with GT54 transducer	010-02683-01	753759307875				
		RRP:				
EUR	GBP	NOK	SEK	DKK	FIN EUR	
1,399.99	-	14 999	15 899	10 849	1 449	

**ECHOMAP™
UHD2 9" series**



INCLUDES		COUNTRY OF ORIGIN				
ECHOMAP UHD2 9" chartplotter, GT56 transducer where noted, power cable, tilt mount with quick-release cradle, flush mount, protective sun cover, hardware and documentation.		Made in Taiwan. Cables made in China or Taiwan.				
DESCRIPTION	SKU	UPC				
ECHOMAP UHD2 92sv, without transducer	010-02687-00	753759307950				
		RRP:				
EUR	GBP	NOK	SEK	DKK	FIN EUR	
1,299.99	-	13 999	14 799	10 099	1 349	
DESCRIPTION	SKU	UPC				
ECHOMAP UHD2 92sv, with GT56 transducer	010-02687-01	753759307967				
		RRP:				
EUR	GBP	NOK	SEK	DKK	FIN EUR	
1,599.99	-	17 199	18 199	12 399	1 659	

ECHOMAP™ UHD2 CHARTPLOTTERS

**NEW PRODUCT
ANNOUNCEMENT**

PRODUCT SPECIFICATIONS:

	ECHOMAP™ UHD2 6"	ECHOMAP™ UHD2 7"	ECHOMAP™ UHD2 9"
Physical dimensions (W x H x D)	8.1" x 5.2" x 2.6" (20.6 x 13.1 x 6.7 cm)	8.6" x 5.6" x 3.2" (21.8 x 14.2 x 8.1 cm)	10.4" x 6.5" x 3.2" (26.4 x 16.6 x 8.0cm)
Display size (W x H, Diagonal)	5.4" x 3.1", 6.2" (13.8 x 7.8, 15.7 cm)	6.1" x 3.4", 7.0" (15.5 x 8.7, 17.8 cm)	7.8" x 4.5", 9.0" (19.8 x 11.5, 22.9 cm)
Resolution	800 x 480 pixels	800 x 480 pixels	1024 x 600 pixels
Weight	1.8 lbs (0.8 kg)	2.2 lbs (1.0 kg)	2.9 lbs (1.3 kg)
Water rating	IPX7	IPX7	IPX7
Built-in receiver	Yes	Yes	Yes
Built-in receiver Hz	10 Hz	10 Hz	10 Hz
BlueChart® g3 and BlueChart® g3 Vision	Yes	Yes	Yes
Garmin Navionics+™	Yes	Yes	Yes
Auto Guidance+ technology	Yes, with supported mapping	Yes, with supported mapping	Yes, with supported mapping
Card slot	1 microSD card; 32 GB maximum size	1 microSD card; 32 GB maximum size	1 microSD card; 32 GB maximum size
Waypoints	5,000	5,000	5,000
Track points	50,000	50,000	50,000
Tracks	50 saved tracks	50 saved tracks	50 saved tracks
Routes	100	100	100
Sailing features	Yes	Yes	Yes
Built-in sonar	Yes	Yes	Yes
Traditional	Yes	Yes	Yes
ClearVü™ and SideVü™ sonar	Yes	Yes	Yes
Sonar frequencies	Traditional: Single Channel CHIRP, 50/77/83/200 kHz, L, M, H CHIRP Garmin ClearVü and SideVü: 260/455/800/1000/1200 kHz	Traditional: Single Channel CHIRP, 50/77/83/200 kHz, L, M, H CHIRP Garmin ClearVü and SideVü: 260/455/800/1000/1200 kHz	Traditional: Single Channel CHIRP, 50/77/83/200 kHz, L, M, H CHIRP Garmin ClearVü and SideVü: 260/455/800/1000/1200 kHz
PIN in transducer ports	12 PIN	12 PIN	12 PIN
Wi-Fi® connectivity (local)	Yes	Yes	Yes


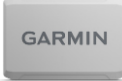


PACKAGING SPECIFICATIONS:

	ECHOMAP UHD2 6" chartplotter without transducer	ECHOMAP UHD2 6" chartplotter with transducer	ECHOMAP UHD2 7" chartplotter without transducer	ECHOMAP UHD2 7" chartplotter with transducer	ECHOMAP UHD2 9" chartplotter without transducer	ECHOMAP UHD2 9" chartplotter with transducer
Gift box dimensions: (W x H x D)	11.4" x 7.9" x 8.2" (28.9 x 20.1 x 20.8 cm)	13.7" x 7.9" x 8.2" (34.8 x 20.1 x 20.8 cm)	11.4" x 7.9" x 8.2" (28.9 x 20.1 x 20.8 cm)	13.7" x 7.9" x 8.2" (34.8 x 20.1 x 20.8 cm)	13.3 x 7.9" x 10.1" (33.8 x 20.1 x 52.8 cm)	13.7 x 7.9" x 10.1" (34.8 x 20.1 x 52.8 cm)
Gift box weight:	3.9 lbs (1.8 kg)	5.8 lbs (2.6 kg)	4.3 lbs (1.9 kg)	6.2 lbs (2.8 kg)	5.3 lbs (2.4 kg)	7.9 lbs (3.6 kg)
Master carton dimensions: (W x H x D)	24.6" x 17.3" x 12.3" (62.5 x 43.9 x 31.2 cm)	24.6" x 17.3" x 14.6" (62.5 x 43.9 x 37.1 cm)	24.6" x 17.3" x 12.3" (62.5 x 43.9 x 31.2 cm)	24.6" x 17.3" x 14.6" (62.5 x 43.9 x 37.1 cm)	21.1" x 13.9" x 17.2" (53.6 x 35.3 x 43.7 cm)	21.1" x 15.8" x 17.2" (53.6 x 40.1 x 43.7 cm)
Master carton weight:	23.4 lbs (10.6 kg)	34.8 lbs (15.8 kg)	25.8 lbs (11.7 kg)	37.2 lbs (16.9 kg)	21.2 lbs (9.6 kg)	31.6 lbs (14.3 kg)
Master carton quantity:	6			4		

ECHOMAP™ UHD2 CHARTPLOTTERS

**NEW PRODUCT
ANNOUNCEMENT**

COMPATIBLE ACCESSORY OVERVIEW:

		SKU	UPC	RRP	DESCRIPTION	IMAGE
NEW	BAIL MOUNT WITH QUICK-RELEASE CRADLE	010-13115-10 (6") 010-13115-11 (7") 010-13115-12 (9")	753759318819 (6") 753759318826 (7") 753759318833 (9")	€149.99	Surface mount your compatible ECHOMAP UHD2 chartplotter by using our bail mount with knobs; the mount tilts for optimum viewing. Plugging the cables into the mount's quick-release cradle allows you to quickly seat/unseat your device with ease.	
NEW	PROTECTIVE COVER	010-13116-02 (6") 010-13116-03 (7") 010-13116-04 (9")	753759318840 (6") 753759318857 (7") 753759318864 (9")	€24.99	Protect your compatible marine device from the sun and scratches when not in use. This protective cover fits snugly over the display to avoid exposure.	
NEW	SD CARD DOOR	010-13115-01	753759284732	€9.99	Secure and protect the memory card in your compatible marine device with this SD door.	
NEW	THREADED POWER (2-PIN)	010-13115-02	753759310851	€29.99	Power your compatible ECHOMAP™ chartplotter with this 6 foot, 2-pin power cable.	

¹Auto Guidance+ is for planning purposes only and does not replace safe navigation operations

Wi-Fi is a registered trademark of the Wi-Fi Alliance.